

WAIKATO/BOP MASTERS ATHLETICS ASSOCIATION



WAIKATO/BOP MASTERS ATHLETICS ASSOCIATION

Best Performances from Members of Waikato/Bay of Plenty

Masters Athletes: Updated: 31 March 2017

Contact: Bruce Solomon

Email: bruce@kellysports.co.nz

NZR = Official NZ Records

NZ = NZ Champs

NI = North Island Champs

SI = South Island Champs

W = Worlds

O = Oceania Champs

Aust = Australia Champs

WC = Waikato Champs

WM = Waikato/BOP Meeting

Reg = Regional meeting

TT = Twilight Tauranga

PC = Porritt Classic

NZCE = NZ Combined events

NZP = NZ Postal Champs

NC = Nothland Champs

AWD = Athlete with Disability

RW/LD = Long Distance NZ Race Walk

AKL = Auckland

NZMG = NZ Masters Games

Club = Club

60m:

M30:	V Smith	8.14	2012 (O)	W30:	K Wells	8.36	2013 (NI)
M35:	M Pilcher	7.49	2012 (NZR)	W35:	M Taylor	10.00 h	2010 (WM)
M40:	K Philpot	7.40 h	2008 (club)	W40:	J Lile	8.09	2012 (O)
M45:	S Te Whaiti	7.69	2012(NI)	W45:	P Hewitt	11.00 h	1985 (Putaruru)
M50:	B Solomon	7.72	2015 (WM)	W50:	A Graham	9.68	2015 (NZ)
M55:	S Burden	7.94	2015 (Reg)	W55:	C Kerrison	11.26	2012 (NI)
M60:	A Hill	8.10 h	1985 (Putaruru)	W60:	S Gower	9.58	2012 (NZ)
M65:	K Savage	10.23	2009 (NI)	W65:	S Gower	9.68	2013 (NZR)
M70:	A Silvester	9.63	2012 (O)	W70:	J Williams	10.90	2009 (WM)
M75:	S Foster	9.71	2012 (NI)	W75:	J Sherburn	12.23	2016 (WC)
M80:	L Williams	11.79	2015 (NI)	W80:	M Petley	12.99	2012 (NZR)
M85:	H Mein	14.01	2015 (NI)	W85:	M Petley	14.00	2015 (NZ)
M90:	E de Lautour	14.88	2011(WM)				

100m:

M30:	S Te Whaiti	11.50	2001 (TT)	W30:	T Assink	12.30	2007 (NI)
M35:	M Brooking	11.20 h	1984 (NZR)	W35:	A Williams	13.10	1984 (NZ)
M40:	S Te Whaiti	11.85	2005 (NZ)	W40:	J Lile	13.40	2013 (WC)
M45:	S TeWhaiti	11.95	2011 (NZ)	W45:	L Wana	14.20	1986 (NI)
M50:	S Te Whaiti	12.14	2015 (NZ)	W50:	S Gower	14.24	2002 (NZ)
M55:	A Hill	12.00	1982 (NZ)	W55:	S Gower	14.46	2006 (NZ)
M60:	F Copeman	12.99	1986 (NZ)	W60:	S Gower	15.19	2011 (W)
M65:	D Hilton	13.15	1989 (NI)	W65:	S Gower	15.47	2013 (WC)
M70:	G de Bell	14.70	1982 (NZ)	W70:	J Williams	17.33	2007 (NZ)
M75:	S Foster	15.23	2012 (NI)	W75:	J Sherburn	20.20	2016 (WC)
M80:	H Mein	19.06	2012 (O)	W80:	M Petley	20.05	2011(WM)
M85:	E de Lautour	20.05	2006 (O)	W85:	M Petley	23.66	2015 (NZ)
M90:	F Cox	21.30	2002 (NZR)				

WAIKATO/BOP MASTERS ATHLETICS ASSOCIATION

150m:

M35:	R Otto	20.30h	2006 (SI)	W35:			
M40:	P Ranginui	18.74 h	2011 (WM)	W40:			
M45:	B Solomon	17.50 h	2012 (club)	W45:			
M50:	B Solomon	17.49 h	2013 (club)	W50:			
M55:	S Burden	18.30 h	2014 (WM)	W55:			
M60:				W60:	S Gower	22.86 h	2011 (WM)
M70:	S Foster	23.10 h	2011 (WM)	W70:	J Sherburn	29.20 h	2011 (WM)
M75:	L Williams	27.10 h	2011 (WM)	W75:			
M80:	H Mein	32.20 h	2014 (WM)	W80:	M Petley	32.60 h	2011 (WM)
M85:				W85:	M Petley	37.09 h	2015 (WM)
M90:	E de Lautour	36.90 h	2012 (club)				

Relays:

4 x 100m	WBOP "A"	51.27	2014 (NZ)	(W42 J Lile, W32 K Wells, M50 P Daborn, M51 B Solomon)			
4 x 100m	WBOP "A"	53.83	2014 (NZ)	(W42 J Lile, M55 S Burden, M65 S Gower, M51 B Solomon)			

200m:

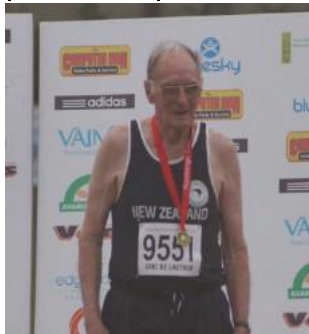
M30:				W30:	T Assink	25.50	2007 (NI)
M35:	M Brooking	23.00	1984 (NZ)	W35:	A Williams	27.76	1983 (NZ)
M40:	K Philpot	24.03	2009 (NZ)	W40:	J Lile	27.54	2014 (PC)
M45:	P Daborn	24.82	2012 (NI)	W45:	S Waru	29.99	1995 (WC)
M50:	B Solomon	24.24	2013 (Aust)	W50:	S Gower	26.06	2001(W)
M55:	A Hill	24.90	1980 (NZ)	W55:	S Gower	29.99	2004 (NI)
M60:	F Copeman	26.74	1987 ()	W60:	S Gower	31.19	2010 (NZ)
M65:	F Copeman	27.84	1991 (O)	W65:	S Gower	32.23	2016 (W)
M70:	S Foster	30.53	2008 (O)	W70:	A Acott	36.60	1998 (NI)
M75:	S Foster	31.65	2012 (NI)	W75:	M Petley	43.03	2004 ()
M80:	H Mein	36.30	2010 ()	W80:	M Petley	46.18	2010 (NZ)
M85:	E de Lautour	40.08	2006 (NZR)	W85:	M Petley	54.58	2015 (NZ)
M90:	E de Lautour	50.07	2012 (NI)				

300m:

M35:	R Otto	50.80 h	2006 (SI)	W35:			
M40:	P Ranginui	44.50 h	2011 (WM)	W40:	J Lile	67.20 h	2011(WM)
M45:	B Solomon	40.60 h	2012 (club)	W45:	P Creighton	48.30 h	2012 (club)
M50:	B Solomon	38.00 h	2016 (club)	W50:			
M55:	S Burden	43.80 h	2014 (WM)	W55:			
M60:	M Clarkson	52.10 h	2011 (WM)	W60:	S Gower	58.40 h	2011(WM)
M70:	S Foster	58.50 h	2011 (WM)	W70:			
M80:	H Mein	90.70 h	2014 (WM)	W80:	M Petley	98.80 h	2011(WM)



Fred Copeman



Eric de Lautour



Sheryl Gower

WAIKATO/BOP MASTERS ATHLETICS ASSOCIATION

400m:

M30:	N Gregg	61.52	2012 (O)	W30:	T Assink	59.89	2008 (NI)
M35:	M Brooking	52.09	1984 (NZ)	W35:	J Maxwell	63.40	1984 (NZ)
M40:	K Philpot	53.95	2009 (NZ)	W40:	P Creighton	59.84	2012 (O)
M45:	M Clarkson	55.25	1993 (NZ)	W45:	J Chandler	65.95	1986 (NZ)
M50:	B Solomon	55.35	2013 (Aust)	W50:	S Gower	66.65	2002 (NZ)
M55:	A Hill	56.60	1980 (NZ)	W55:	S Gower	67.55	2003 (NZR)
M60:	M Clarkson	69.20	2009 (NI)	W60:	S Gower	73.01	2007 (W)
M65:	R McGregor	69.44	2006 (NZ)	W65:	A Acott	80.20	1994 (WC)
M70:	A Silvester	68.30	2012 (O)	W70:	A Acott	88.16	1998 (O)
M75:	D de Lautour	76.47	1997 (WC)	W75:	M Petley	1.43.40	2005 (W)
M80:	E de Lautour	83.77	2002 (NZR)	W80:	M Petley	1.51.06	2009 (W)
M85:	E de Lautour	89.82	2006 (NZR)				
M90:	E de Lautour	2.14.66	2012 (NI)				

600m:

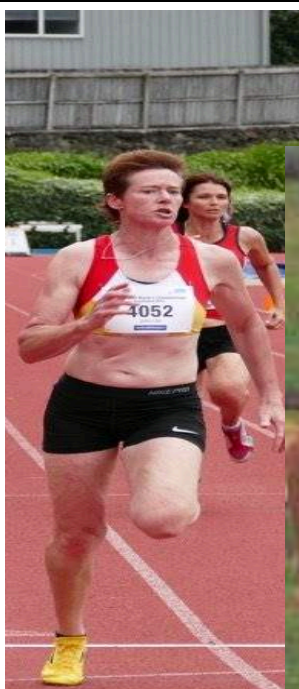
M40:	P Ranginui	1.50.00 h	2011 (WM)	W35:	C Browne	1.59.80 h	2008 (club)
M45:	I Bitcheno	1.43.02 h	2012 (club)	W40:	P Creighton	1.52.60 h	2008 (club)
M50:	B Solomon	1.43.00 h	2013 (club)	W45:	Y Jarvis	2.30.50 h	2008 (club)
M55:	G Smith	1.53.60 h	2008 (club)				
M60:	M Clarkson	1.51.20 h	2008 (club)				
M70:	S Pavett	2.26.40 h	2008 (club)				
M80:	H Mein	3.28.10 h	2014 (club)				



Bruce Solomon



Paul Daborn



Julia Lile



Judy Chandler

800m:

M30:	W Doney jnr	2.12.04	2016 (NI)	W30:	R Winter	2.29.20	1980 (NZ)
M35:	W Doney snr	2.03.20	1992 (NI)	W35:	P Kenny	2.15.00	1983 (W)
M40:	M Clarkson	2.01.90	1992 (NZ)	W40:	J Chandler	2.20.30	1979 (W)
M45:	M Clarkson	2.04.30	1993 (NZ)	W45:	S Gibbs	2.19.72	2010 (NZR)
M50:	M Clarkson	2.06.26	1997 (NZ)	W50:	S Gibbs	2.30.13	1989 (W)
M55:	D Hilton	2.05.00	1990 (WC)	W55:	J Chandler	2.43.49	1993 (W)
M60:	M Clarkson	2.24.55	2007 (W)	W60:	M Petley	3.00.05	1991 (W)
M65:	M Clarkson	2.43.50	2013 (NZ)	W65:	M Petley	3.10.01	1997 (W)
M70:	E de Lautour	2.51.70	1994 (NI)	W70:	A Acott	3.34.20	1998 (NI)

WAIKATO/BOP MASTERS ATHLETICS ASSOCIATION

800m:

M75:	E de Lautour	2.54.80	1997 (WC)	W75:	M Petley	4.15.50	2005 (W)
M80:	E de Lautour	3.13.16	2001 (NZR)	W80:	M Petley	4.37.68	2009 (NZR)
M85:	E de Lautour	3.36.30	2007 (NZR)				
M90:	E de Lautour	5.31.60	2012 (O)				

1500m:

M30:	W Doney jnr	4.35.30	2016 (NI)	W30:	R Winter	4.58.0	1980 (NZ)
M35:	W Doney snr	4.14.05	1993 (NZ)	W35:	D Brown	4.51.87	1986 (NZ)
M40:	D Litt	4.06.30	1992 (NZ)	W40:	J Chandler	4.58.1	1979 (W)
M45:	D Litt	4.15.20	1993 (WC)	W45:	S Gibbs	4.42.89	2011 (NZR)
M50:	M Clarkson	4.26.80	2000 (NZ)	W50:	J Chandler	5.22.9	1990 (WC)
M55:	T Ogilvie	4.31.62	2004 (NZ)	W55:	P Hewitt	5.42.26	1993 (NZ)
M60:	T Ogilvie	4.47.36	2009 (NZ)	W60:	P Hewitt	6.13.5	1996 ()
M65:	G Adams	5.24.91	2015 (WC)	W65:	P Hewitt	6.50.87	2001 (W)
M70:	E de Lautour	5.57.70	1992 (NZ)	W70:	A Jones	7.15.80	2008 (O)
M75:	E de Lautour	5.56.79	1997 (NZ)	W75:	P Hewitt	8.27.53	2012 (NI)
M80:	E de Lautour	6.38.86	2001 (NZR)				
M85:	E de Lautour	7.03.40	2006 (NZR)				
M90:	E de Lautour	11.37.00	2012 (NI)				

One Mile:

M35:	B Magill	5.03.20	2001 (TT)	W35:			
M40:	R Lake	5.57.17	2014 (club)	W40:			
M45:	I Bitcheno	5.52.40	2015 (club)	W45:	S Gibbs	5.02.40	2012 (club)
M50:	B Solomon	6.01.41	2013 (club)	W50:	S Gibbs	5.15.88	2014 (club)
M55:	G Smith	6.09.24	2013 (club)	W55:			
M60:	G Smith	5.54.30	2015 (club)	W60:	R Winter	8.43.18	2013 (club)
M65:	M Clarkson	6.16.77	2013 (club)	W65:			
M70:	H Mein	7.30.09		W70:			
M75:	S Pavett	8.20.63	2013 (club)	W75:			
M80:	S Pavett	8.42.24	2014 (club)				



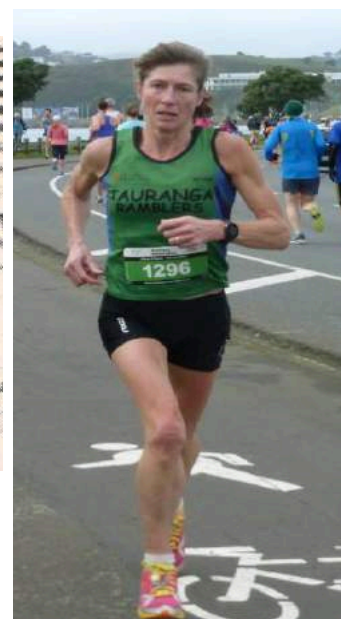
Ian Bitcheno



Syd Pavett



Jim Daly



Sally Gibbs

WAIKATO/BOP MASTERS ATHLETICS ASSOCIATION

3000m:

M30:	W Doney	10.38.73	2016 (NI)	W30:	L McPhilips	9.34.43	2000 (WC)
M35:	B Dixon	10.14.94	2015 (TT)	W35:	V Robinson	10.31.60	1976 (NZ)
M40:	C Earwaker	8.47.70	1998 (WC)	W40:	S Crowley	10.43.44	2014 (TT)
M45:	C McLean	9.48.29	2014 (TT)	W45:	S Gibbs	9.55.06	2012 (NI)
M50:	B Hussain	9.49.97	2015 (TT)	W50:	S Gibbs	9.54.83	2015 (TT)
M55:	T Ogilvie	10.05.00	2007 (NI)	W55:	P Hewitt	12.28.60	1993 (WC)
M60:	G Smith	11.21.07	2016 (TT)	W60:	P Hewitt	12.52.20	1996 ()
M65:	G Adams	11.50.95	2015 (WC)	W65:	A Jones	15.08.00	2007 (NI)
M70:	R McPherson	13.15.38	2012 (NI)	W70:	F Riley	22.55.33	2012 (NI)
M75:	S Pavett	15.19.95	2012 (club)				
M80:	E de Lautour	15.06.14	2002 (SI)				
M85:	E de Lautour	17.17.58	2007 (NZR)				



Brendan Magill

Eric de Latour



Murray Clarkson



Gavin Smith & Sally Gibbs

5000m:

M30:	G McMillan	19.58.42	2006 (NZR)	W30:	R Winter	18.50.20	1980 ()
M35:	P Ritchie	15.20.59	1996 ()	W35:	D Brown	18.23.39	1986 (NZ)
M40:	C Earwaker	14.15.60	1998 ()	W40:	R MacLoughlin	18.30.10	1985 (W)
M45:	D Litt	15.21.50	1997 (WC)	W45:	S Gibbs	16.44.53	2012 (O)
M50:	J Daly	16.29.30	1976 (NZ)	W50:	S Gibbs	17.38.44	2016 (W)
M55:	T Ogilvie	16.47.56	2006 (O)	W55:	P Hewitt	21.19.35	1993 (NZ)
M60:	T Ogilvie	17.36.04	2009 (NZ)	W60:	S Waru	23.26.57	2009 (W)
M65:	N Fleming	20.36.89	2002 (NZ)	W65:	P Hewitt	24.09.22	2001 (W)
M70:	S Pavett	21.00.35	2004 (NZ)	W70:	A Jones	26.01.84	2008 (O)
M75:	E de Lautour	21.54.30	1996 (NI)				
M80:	E de Lautour	24.05.14	2001 (NZR)				
M85:	E de Lautour	26.18.47	2007 (NZR)				

WAIKATO/BOP MASTERS ATHLETICS ASSOCIATION

10,000m:

M30:	G McMillan	41.49.19	2006 (NZR)	W30:	L Sharp	35.27.15	2004 (NZ)
M35:	D Larsen	32.18.43	1996 (NZ)	W35:	R Winter	40.14.00	1987 (NZ)
M40:	D Litt	32.45.82	1996 (NZ)	W40:	S Waru	38.58.00	1991 (WC)
M45:	N Fleming	34.22.00	1983 (NZ)	W45:	S Gibbs	34.45.21	2012 (NZR)
M50:	R Jones	34.48.25	1986 (NZ)	W50:	S Gibbs	36.35.33	2016 (W)
M55:	G Moller	37.38.0	1981 (W)	W55:	P Hewitt	42.49.58	1991 ()
M60:	G Smith	40.21.11	2015 (club)	W60:	P Hewitt	47.24.20	1997 ()
M65:	R McPherson	43.59.83	2009 (NZ)	W65:	J McRae	56.51.00	1991 (W)
M70:	S Pavett	42.30.86	2004 (NZ)	W70:	J Fleming	57.04.82	2011 (W)
M75:	E de Lautour	45.43.45	1996 (NZ)				
M80:	E de Lautour	50.14.77	2001 (NZR)				
M85:	E de Lautour	58.01.26	2007 (NZR)				

Short Hurdles 110 - 80m

				W30 100H:	T Genge	14.95	1991 (NZR)
M35: 110H	S TeWhaiti	17.95	2002 (NZ)	W35 100H:	A Williams	17.54	1983(NZ)
M40: 110H	R Fletcher	16.33	1986 (NZ)	W40 100H:	S Graham	17.40	2002 (WC)
M45: 110H	P Daborn	18.71	2012 (NZR)	W45 100H:			
M50: 100H	A Isaac	15.80	1990 (NZ)	W50 100H:	M Clarke	19.40	1991 (NI)
M50: 100H	P Daborn	16.53	2016 (NZR)				
M55: 100H	R Ball	16.20 h	1991 (NZR)				
M60: 100H	S Foster	17.30 h	1998 (NZR)				
M65: 100H	S Foster	20.03	2003 (NZR)				
M70: 80H	H Mein	23.03	2001 ()				
M75: 80H	S Foster	18.22	2012 (NZR)				

Long Hurdles 400 - 300m

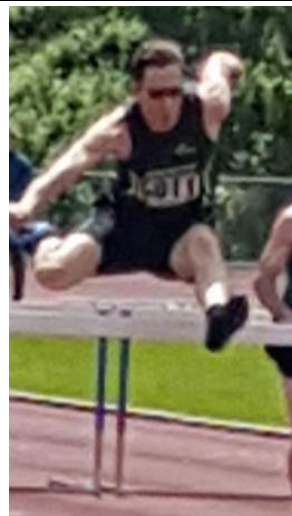
M35: 400H	J Edwin	64.79	1983 ()	W35 400H:	Annette Harris	75.50	1996 ()
M40: 400H	P Daborn	60.03	2008 (NI)	W40 400H:			
M45: 400H	B Carswell	63.84	2007 (W)	W45 400H:	A Graham	86.10	2009 (NZ)
M50: 400H	P Daborn	63.24	2016 (PC)	W50 300H:	A Graham	61.20	2012 (O)
M55: 400H	S Foster	71.00	1996 (O)				
M60: 300H	S Foster	48.75	1997 (NZ)				
M65: 300H	S Foster	55.00	2003 (NZ)				
M70: 300H	S Foster	55.52	2008 (NZR)				
M75: 300H	S Foster	61.26	2014 (NZR)				



Stu Foster



Robyn Winter



Paul Daborn



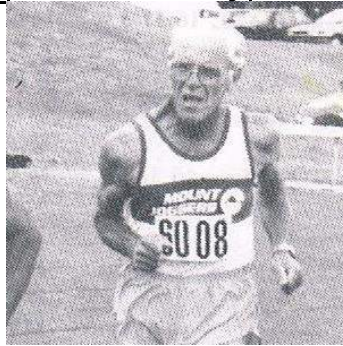
Marion Clarke

WAIKATO/BOP MASTERS ATHLETICS ASSOCIATION

Steeple 2000m: 0.914m	WPV	S Graham	8.59.80	1991 ()
	W65	R Winter	12.56.26	2014 (NI)

Steeples 2000m: 0.762m				WPV	L Reynolds	8.34.09	2000 (NZR)
				W35:	K Paulger	7.57.55	2001 (NZ)
M60:	G Smith	8.20.75	2016 (WM)	W40:	T McRoy	8.28.70	1991 (NZ)
M65:	T Ogilvie	7.18.84	2009 (NZ)	W45:	F Riley	8.32.47	1988 (NZ)
M70:	H Mein	9.10.31	2001 (W)	W55:	T McRoy	9.37.12	2006 (O)
M75:	H Mein	9.57.89	2006 (NZR)	W60:	F Riley	10.59.91	2006 (O)
				W65:	T McRoy	10.41.83	2012 (NZR)

Steeple	3000m		
M35:	W Doney	10.42.00	1992 (O)
M40:	C Earwaker	10.02.61	2001 (W)
M45:	C Sinclair	12.12.95	2016 (NI)
M50:	R Jones	11.14.01	1986 (NZ)
M55:	T Ogilvie	10.48.53	2006 (O)
M60:	C Southwick	13.10.5	1982 (NZ)



Hector Mein

2000m		Track Walk					
M40:	A Northcote	12.25.00	1981(WM)				
M45:	R Longshaw	13.20.00	1981 (WM)				
M50:	T Guy	12.18.00	1981(WM)	W35:	B Savage	14.15.70	1981 (WM)
M55:	F Copeman	12.18.00	1981(WM)				

3,000m		Track Walk					
M35:	L McPhillips	13.08.87	2001(NZR)	W30:	T Mason	22.58.80	1998 (NI)
M40:	T Lamason	15.49.50	1986 (NI)	W35:	B Savage	21.28.00	1983 (NZ)
M45:	T Fulcher	16.18.70	1984 (NZ)	W40:			
M50:	T Guy	17.04.60	1984 (NZ)	W45:	L Foster	15.13.51	1990 ()
M55:	T Guy	17.02.80	1986 (NI)	W50:	L Foster	16.19.30	1992 (NZR)
M60:	T Guy	17.30.80	1989 (NI)	W55:	L Foster	17.34.50	1996 ()
M65:	T Guy	19.08.20	1996 ()	W60:	L Foster	19.06.77	2002 (SI)
M70:	T Hamilton	20.22.70	1983 (NZ)	W65:	K Kenneth-Low	20.09.20	1983(NZ)
M75:	G Powley	22.23.94	2004 (NZ)	W70:	K Kenneth-Low	21.04.71	1986 (NZ)
M80:	F Cox	22.44.80	1993 ()	W75:	E Guy	25.57.31	2009 (NZ)

5.000m		Track Walk					
M35:	L McPhillips	24.46.00					
M45:	M Taylor	27.08.48	2001 ()	W45:	L Foster	28.29.62	1989 ()
M50:	M Gray	30.45.00	2013 (Ackl)	W50:	L Foster	27.22.90	1991 (NZR)
M55:	M Gray	30.31.45	2016 (WC)	W55:	L Foster	31.17.72	1998 (NZR)
M60:	T Guy	29.43.00	1990 (O)	W60:	L Foster	32.06.64	2002 (NZR)
M65:	T Guy	32.15.02	1995 (WC)	W65:	L Foster	35.46.91	2006 (O)
M70:	T Guy	35.45.69	2004 (WC)	W70:	K Kenneth-Low	34.38.10	1985 (NZR)
M75:	T Guy	38.46.65	2009 (WC)				

WAIKATO/BOP MASTERS ATHLETICS ASSOCIATION

10km Track Walk

M55:	M Gray	1.08.49	2015 (NI)
------	--------	---------	-----------



Ted Guy



Mark Gray



L Foster

10km Road Walk

M35:	L McPhillips	47.57.0	2001(NZR)				
M40:	L McPhillips	54.47.0	2004 (NZ)	W45:	L Foster	58.44.00	1989
M45:	T Fulcher	58.25.5	1984 (NZ)	W50:	L Foster	57.16.00	1991 (NZR)
M50:	T Guy	63.31.1	1984 (NZ)	W55:	L Foster	1.03.14	1999
M55:	T Guy	58.47.0	1988 (NI)	W60:	L Foster	1.05.28	2002 (NZ)
M60:	T Guy	1.01.26	1992(NZ)	W65:	L Foster	1.12.16	2006 (O)
M65:	T Guy	1.01.42	1989 (NI)	W70:	K Kenneth-Low	1.08.42	1987 (NZR)
M70:	T Hamilton	1.15.00	1982 (NZ)	W75:	E Guy	1.29.60	2009 (NZ)
M75:	T Guy	1.22.10	2009 (NZ)				
M80:	E de Lautour	1.57.33	2004 (NZ)				

20km Road Walk

M35:	D Cameron	1.52.02.0	2001 (NZR)	W50:	L Foster	2.01.37	1992 (NZ)
	R Smyth	2.03.41	2009 (RW/LD)	W55:	L Foster	2.15.12	1996 (NZ)

30km Road Walk

M40:	L McPhillips	2.59.32	2004 (NZR)
-------------	---------------------	----------------	-------------------

Long Jump

M30:	V Smith	5.59	2012 (O)	WPV	T Genge	5.30	1990 (NZR)
M35:	S Te Whaiti	6.02	2000 (WC)	W35:	A Williams	5.31	1984 (NZR)
M40:	M Gaukrodger	6.08	1996 (NZ)	W40:	B Scott	4.46	1980 (NZ)
M45:	S Te Whaiti	5.49	2009 (NZ)	W45:	M Clarke	3.66	1988 (NZ)
M50:	S Burden	5.49	2012 (NZ)	W50:	B Windeatt	3.77	1992 (O)
M55:	S Burden	5.28	2014 (NI)	W55:	B Windeatt	3.33	1995 (NI)
M60:	R McGregor	4.75	2000 (WC)	W60:	M Petley	3.45	1993 (NZ)
M65:	R McGregor	4.35	2007 (NI)	W65:	M Petley	3.31	1996 ()
M70:	H Mein	3.63	2001 (W)	W70:	M Petley	2.84	1999 (NZ)
M75:	L Williams	3.32	2010 (WM)	W75:	J Sherburn	2.50	2016 (WC)
M80:	H Mein	3.13	2011 (NI)				
M85:	H Mein	2.27	2016 (NI)				
M90:	F Cox	1.30	2002 (NZR)				

WAIKATO/BOP MASTERS ATHLETICS ASSOCIATION



Stephen Burden



Frank Cox



Stephen Te Whaiti



Marcia Petley

Triple Jump:

MPV:	W Doney jnr	10.14	2015 (WC)	WPV:	N Buchanan	9.16	2001 (NZ)
M35:	W Doney	10.86	1992 (O)	W35:	T Genge	10.67	1993 (NZR)
M40:	R Fletcher	12.69	1985 (NZ)	W40:	L Lochhead	8.01	1996 (NZ)
M45:	R Fletcher	12.32	1987 (NZ)	W45:	I Hansen	7.76	1989 (NI)
M50:	S Burden	11.61	2011 (W)	W50:	B Turbott	7.72	1990 (NZ)
M55:	S Burden	11.40	2016 (W)	W55:	M Petley	6.64	1984?
M60:	W Fenton	10.44	1981 (NZR)	W60:	M Petley	7.26	1989 ()
M65:	L Williams	8.88	2001 (NZ)	W65:	M Petley	7.22	1995 (W)
M70:	B Clarke	7.36	2009 (NZ)	W70:	M Petley	6.38	1999 (NZ)
M75:	L Williams	7.55	2008 (NZ)	W75:	M Petley	5.44	2004 (O)
M80:	L Williams	6.35	2015 (NI)				
M85:	H Mein	4.64	2016 (NI)				

High Jump:

M30:	W Doney jnr	1.75	2015 (WC)	WPV:	T Genge	1.55	1991
M35:	S Te Whaiti	1.70	2000 (NZ)	W35:	A Harris	1.50	1996 (NZR)
M40:	P Ranginui	1.78	2010 (NZ)	W40:	A Harris	1.30	2001 (WMA)
M45:	R Fletcher	1.71	1988 (NZ)	W45:	M Clarke	1.16	1986 (NI)
M50:	R Fletcher	1.74	1994(WC/NZR)	W50:	M Clarke	1.16	1990 (NZ)
M55:	R McGregor	1.41	1999 ()	W55:	B Turbott	1.15	1993 (W)
M60:	R McGregor	1.48	2001 (NZR)	W60:	J Jacobs	1.03	1994 (NZ)
M65:	R McGregor	1.38	2006 (NZR)	W65:	J Jacobs	1.02	1996 (O)
M70:	R McGregor	1.15	2013 (NZ)	W75:	J Sherburn	0.85	2016(WM)
M75:	L Williams	1.00	2012 (O)				
M80:	H Mein	1.10	2011(WM)				
M85:	H Mein	0.93	2016 (NI)				
M90:	F Cox	0.71	2002 (NZR)				



W Doney Jr

WAIKATO/BOP MASTERS ATHLETICS ASSOCIATION

Pole Vault:

M40:	D Rondon	3.20	2002 (NZ)
M45:	R Ball	3.60	1984 (NZ)
M50:	S Te Whaiti	3.70	1986 (NZR)
M55:	R McGregor	2.50	1998 (NZ)
M60:	R Ball	3.10	1996 (NZR)
M65:	R McGregor	2.20	2007 (NI)
M70:	R McGregor	2.00	2013 (NZ)
M80:	H Mein	2.00	2012 (O)



Tania Hodges



Pauline Purser

Shot Put:

MPV	P Martin (AWD)	8.09	2000 (NZ)	WPV	T Genge	11.81	1990 (O)
MPV	V Smith	11.55	2012 (O)				
M35:	R Otto	12.18	2006 (O)	W35:	C McCahill	13.90	2001 (NZR)
M40:	R Otto	11.86	2009 (WMG)	W40:	C McCahill	12.33	2009 (NZ)
M45:	R Otto	12.00	2012 (NZ)	W45:	C McCahill	11.82	2011 (NZR)
M50:	R Ball	11.99	1986 ()	W50:	T Hodges	10.78	2016 (Putaruru)
M55:	J van Zyl	12.35	2015 (NZ)	W55:	B Savage	10.24	2001 (NZR)
M60:	R Ball	11.48	1996 (NZ)	W60:	B Savage	8.14	2009 (NI)
M65:	G Allingham	10.18	1980 (NZ)	W65:	B Savage	8.78	2013 (NZR)
M70:	P Crawford	11.43	2015 (WC)	W70:	B Savage	7.90	2016 (WC)
M75:	R McGregor	8.91	2015 (WC)	W75:	J Sherburn	6.85	2016 (WC)
M80:	*B Stannius	11.97	2009 (NZR)	W80:	J Williams	4.65	2016 (WM)
M85:	*B Stannius	10.27	2014 (NI)	W85:	P Purser	4.40	2010 (NZR)
M90:	F Cox	3.05	2002 (NZR)	W90:	P Purser	3.80	2014 (NZR)

*NZMA Member non resident

Discus:

MPV	P Martin (AWD)	14.76	2000 (WC)	WPV	B Savage	33.80	1979 ()
MPV	V Smith	34.43	2012 (O)				
M35:	R Otto	37.38	2004 (NZ)	W35:	D Strange	34.98	1992 (O)
M40:	R Otto	39.32	2009 (WMG)	W40:	C McCahill	36.67	2009 (NI)
M45:	R Ball	39.76	1984 (NZ)	W45:	C McCahill	35.34	2010 (NZR)
M50:	R Ball	44.84	1986 (NZR)	W50:	C McCahill	30.54	2000 (WC)
M55:	J van Zyl	39.83	2015 (NZ)	W55:	B Savage	29.45	2001 (NZ)
M60:	R Ball	48.66	1996 (NZR)	W60:	B Scott	21.32	1999 (NI)
M65:	R Ball	44.47	2001 (NZR)	W65:	B Savage	24.58	2012 (NZR)
M70:	P Crawford	35.39	2015 (WM)	W70:	B Savage	20.23	2016 (WC)
M75:	R McGregor	25.78	2015 (WC)	W75:	J Sherburn	14.82	2016 (WC)
M80:	H Mein	18.31	2011 (WM)	W80:	J Williams	9.30	2016 (WM)
M80:	*B Stannius	27.42	2009 (NZ)				
M85:	*B Stannius	23.44	2014 (NI)	W85:	P Purser	11.28	2009 (NZR)
M90:	F Cox	7.22	2002 (NZR)	W90:	P Purser	8.90	2014 (NZR)

*NZMA member non resident

WAIKATO/BOP MASTERS ATHLETICS ASSOCIATION

Javelin:

MPV:	P Martin (AWD)	16.33	2000 (WC)	WPV:	D Hustler	27.08	1981 (NZ)
MPV:	D Couper	46.76	2012 (O)				
M35:	D Couper	48.50	2014 (WC)	W35:	T Genge	30.56	1993 (WC)
M40:	S Te Whaiti	46.25	2007 (NI)	W40:	C Browne	30.55	2009 (NZ)
M45:	S Te Whaiti	43.96	2010 (NZ)	W45:			
M50:	C Murch	46.28	2002 (NZ)	W50:	B Turbott	24.26	1990 (NZ)
M55:	R Ball	50.74	1991 (NZR)	W55:	B Savage	17.00	2001 ()
M60:	R Ball	43.00	1996 ()	W60:	B Scott	16.37	1999(NI)
M65:	R Fletcher	29.86	2009 (NZ)	W65:	P McArthur	18.62	1992 (O)
M70:	P Crawford	31.83	2014 (NI)	W70:	P McArthur	16.46	1996 (O)
M75:	R Laurie	25.41	2011 (WM)	W75:	P McArthur	15.91	2000 (WC)
M80:	H Mein	20.19	2011 (WM)	W80:			
M80	*B Stannius	30.59	2009 (NZR)	W85:	P Purser	9.04	2007 (NZR)
M85:	* B Stannius	23.44	2014 (NI)	W85:	P Purser	9.26	2012 (O)
M90:	F Cox	7.57	2002 (NZR)	W90:	P Purser	7.77	2012 (NZR)

Hammer:

MPV:	V Smith	35.25	2012 (O)	WPV:	M Taylor	21.71	2010 (NZ)
M35:	R Otto	40.15	2006 (SI)	W35:	C McCahill	30.00	2002 (NZR)
M40:	R Otto	43.85	2008 (WT)	W40:	C McCahill	39.89	2006 (NZR)
M45:	R Otto	39.33	2012 (O)	W45:	C McCahill	42.21	2011 (NZR)
M50:	K Bradley	42.19	1998 (O)	W50:	B Savage	42.64	1997 (NZR)
M55:	K Bradley	43.97	2002 (O)	W55:	B Savage	41.89	2001 (NZR)
M60:	K Bradley	46.74	2008 (O)	W60:	B Savage	34.81	2008 (NZR)
M65:	K Bradley	37.77	2009 (NZ)	W65:	B Savage	34.86	2012 (NZR)
M70:	K Bradley	37.50	2016 (WC)	W70:	B Savage	29.27	2016 (WC)
M75:	B Clarke	25.79	2014 (WC)	W75:	M Clarke	21.18	2017 (WC)
M75:	*B Stannius	28.46	2004 (NZ)	W80:	M Petley	17.01	2012 (WM)
M80:	R Laurie	22.49	2015 (WM)	W85:	M Petley	15.92	2014 (NZR)
M80:	*B Stannius	36.69	2009 (NZR)	W85:	M Petley	16.50	2016 (Perth)
M85:	H Mein	15.31	2015 (NI)	W90:	P Purser	12.83	2014 (NZR)
M90:	F Cox	7.64	2002 (NZR)				

*NZMA member non resident



Borg Stannius



Johan van Zyl



David Couper



Rene Otto



Christine McCahill

WAIKATO/BOP MASTERS ATHLETICS ASSOCIATION

Weight Throw:

MPV:	V Smith	13.09	2012 (WM)	WPV:	V Temo	9.25	2013 (WC)
M35:	R Otto	14.10	2006 (NZ)	W35:	C McCahill	16.67	2002 (NZR)
M40:	R Otto	13.84	2007 (NZ)	W40:	C McCahill	15.19	2006 (NZR)
M45:	R Otto	13.46	2012 (O)	W45:	C McCahill	15.48	2011(W)
M50:	K Bradley	13.10	2000(NZ)	W50:	B Savage	12.91	2000 (NZ)
M55:	J van Zyl	14.67	2015 (NZ)	W55:	B Savage	12.01	2001 (W)
M60:	K Bradley	17.45	2006 (NZR)	W60:	B Savage	13.34	2008 (NZR)
M65:	K Bradley	16.44	2009 (NZ)	W65:	B Savage	13.06	2012 (O)
M70:	K Bradley	16.36	2015 (WC)	W70:	B Savage	10.34	2016 (W)
M75:	B Clarke	10.38	2014 (WC)	W75:	J Sherburn	7.75	2016 (WM)
M80:	H Mein	9.08	2014 (WC)	W80:	M Petley	8.94	2012 (NZR)
M80:	*B Stannius	14.66	2009 (NZR)	W85:	M Petley	7.31	2014 (NZR)
M85:	*B Stannius	10.45	2014 (NI)	W90:	P Purser	4.49	2014 (NZR)

*NZMA member non resident

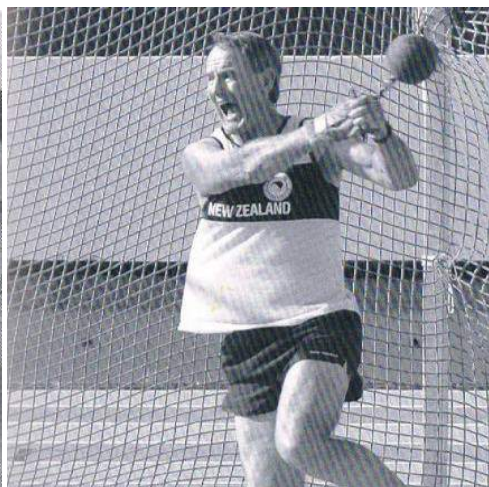
Throws Pentathlon (Weight Pentathlon)

MPV:	V Smith	2395 pts	2012 (O)	WPV:	V Temo	1798 pts	2013 (WC)
M35:	R Otto	2854 pts	2006 (O)	W35:	C McCahill	3884 pts	2002 (NZR)
M40:	R Otto	2900 pts	2007 (NZ)	W40:	C McCahill	3948 pts	2008 (NZR)
M45:	R Otto	3143 pts	2012 (O)	W45:	C McCahill	4285 pts	2009 (NZR)
M50:	W Sinclair	3109 pts	1996 (NZ)	W50:	B Savage	3382 pts	1998 (O)
M55:	J van Zyl	3525 pts	2015 (NZR)	W55:	B Savage	3848 pts	2001 (NZR)
M60:	K Bradley	3308 pts	2004 (NZ)	W60:	B McLeod	2218 pts	2009 (NZ)
M65:	K Bradley	3470 pts	2009 (NZ)	W65:	B Savage	3788 pts	2014 (WC)
M70:	K Bradley	2580 pts	2008 (NZ)	W70:	J Sherburn	2537 pts	2011 (NZ)
M75:	R Laurie	2630 pts	2010 (NZ)	W75:	J Sherburn	2830 pts	2016 (WC)
M80:	H Mein	1977 pts	2012 (O)	W80:	M Petley	3113 pts	2010 (WC)
M80:	*B Stannius	4782 pts	2009 (NZ)	W85:	P Purser	3387 pts	2011 (NZ)
M85:	H Mein	1985 pts	2015 (NI)	W90:	P Purser	2958 pts	2012 (NI)

*NZMA member non resident



Wayne Sinclair



Kevin Bradley



Bev Savage

WAIKATO/BOP MASTERS ATHLETICS ASSOCIATION

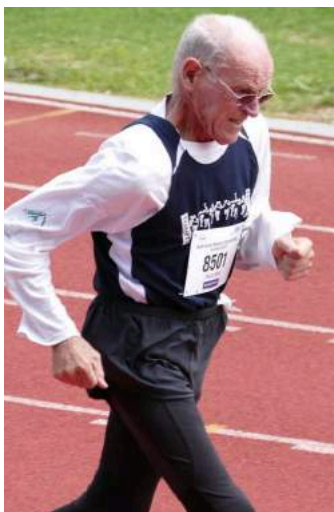
Decathlon:

M35:	S Te Whaiti	5214 pts	2003 (O)
M40:	S Te Whaiti	5759 pts	2005 ()
M45:	S Te Whaiti	6238 pts	2009 (NZR)
M50:	S Te Whaiti	6504 pts	2014 (NZCE)
M55:	R McGregor	6094 pts	1998 (NZR)
M60:	R McGregor	6970 pts	2001 (NZR)
M65:	R McGregor	6526 pts	2005 ()
M70:	H Mein	4956 pts	2001(NZ)
M75:	H Mein	5038 pts	2005 (NZR)



Stephen Te Whaiti

Hector Mein



Rob McGregor



Pentathlon:

				WPV:	T Genge	2816 pts	1990 (NZR)
M35:	S Te Whaiti	2953 pts	2002 (NZR)	W35:	Annette Harris	2788 pts	1996 ()
M40:	S Te Whaiti	3087 pts	2005 (NZR)	W40:	D Hustler	2761 pts	1990 (O)
M45:	S Te Whaiti	3215 pts	2009 (NZ)	W45:	J Dixon	2561 pts	1986 (NZ)
M50:	B Solomon	3030 pts	2013 (NZ)	W50:	B Turbott	2432 pts	1990 (NZ)
M55:	C Hotta	2091 pts	2011 (NI)	W55:	G Dryland	1984 pts	2006 (NZ)
M60:	R McGregor	3507 pts	2000 (NZ)	W60:	M Petley	2755 pts	1993 (NZ)
M65:	R McGregor	3342 pts	2006 (NZ)	W65:	M Petley	3047 pts	1996
M70:	B Clarke	1949 pts	2010 (NZ)	W70:	J Sherburn	2790 pts	2012 (NZ)
M80:	H Mein	2676 pts	2010 (WC)	W75:	J Sherburn	tbc pts	2016 (WC)
M90:	F Cox	577 pts	2003 (NZR)				

WAIKATO/BOP MASTERS ATHLETICS ASSOCIATION

Indoor Championships

50M

M40:	Rob Lyle	7.09	2016 (AKL)
M50:	B Solomon	6.83 (h)	2016 (AKL)
M50:	S Te Whaiti	6.88	2016 (NZR)
M55:	S Burden	7.06	2016 (AKL)

Short Hurdles 50m

M50:	S Te Whaiti	8.70	2016 (AKL)
------	-------------	------	------------

Short Hurdles 60m

M50:	S Te Whaiti	10.87	2017 (W)
------	-------------	-------	----------

1000M

M50:	S Te Whaiti	3.40.93	2017 (W)
------	-------------	---------	----------

Long Jump

M40:	Rob Lyle	4.37	2016 (NZR)
M50:	S Te Whaiti	5.04	2016 (NZR)
M55:	S Burden	5.11	2016 (NZR)

Triple Jump

M50:	S Te Whaiti	9.81	2015 (AKL)
M55:	S Burden	10.80	2016 (NZR)

High Jump

M40:	Rob Lyle	1.50	2016 (NZR)
M50:	S Te Whaiti	1.55	2016 (NZR)

Shot Put

M50:	S Te Whaiti	10.84	2016 (NZR)
M70:	P Crawford	11.22	2016 (NZR)

Pentathlon

M50:	S Te Whaiti	2921	2017 (W)
------	-------------	------	----------



Peter Crawford



Rob Lyle



Stephen Burden Stephen Te Whaiti

WAIKATO/BOP MASTERS ATHLETICS ASSOCIATION